

Quick Lock-On Grease Coupler

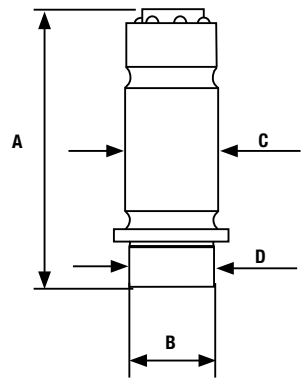


121 060

DESCRIPTION

Revolutionary grease coupler. Smooth lock-on mechanism that eases grease fitting coupling and uncoupling. This is a durable, jaws-free coupler that includes seven retaining balls instead, assuring a proper sealing between grease fitting* and grease pump up to a pressure of 700 bar. Greasing tasks have never been that easy, clean, safe and fast. * DIN 71412

TECHNICAL SPECIFICATIONS	
WETTED MATERIALS	Carbon steel, Stainless steel
MAX. PRESSURE	700 bar / 10000 psi
WEIGHT	40 g / 0.1 pounds
INLET THREAD	1/8" NPT Female
ACCESSORIES	
136 021	300 mm outlet grease hose
289 997	Counter display for 10 units



A	B	C	D
42 mm (1.7")	1/8" NPTF	14 mm (0.5")	18 mm (0.7")

136 021
300 mm outlet grease hose



289 997
Counter display for 10 units

