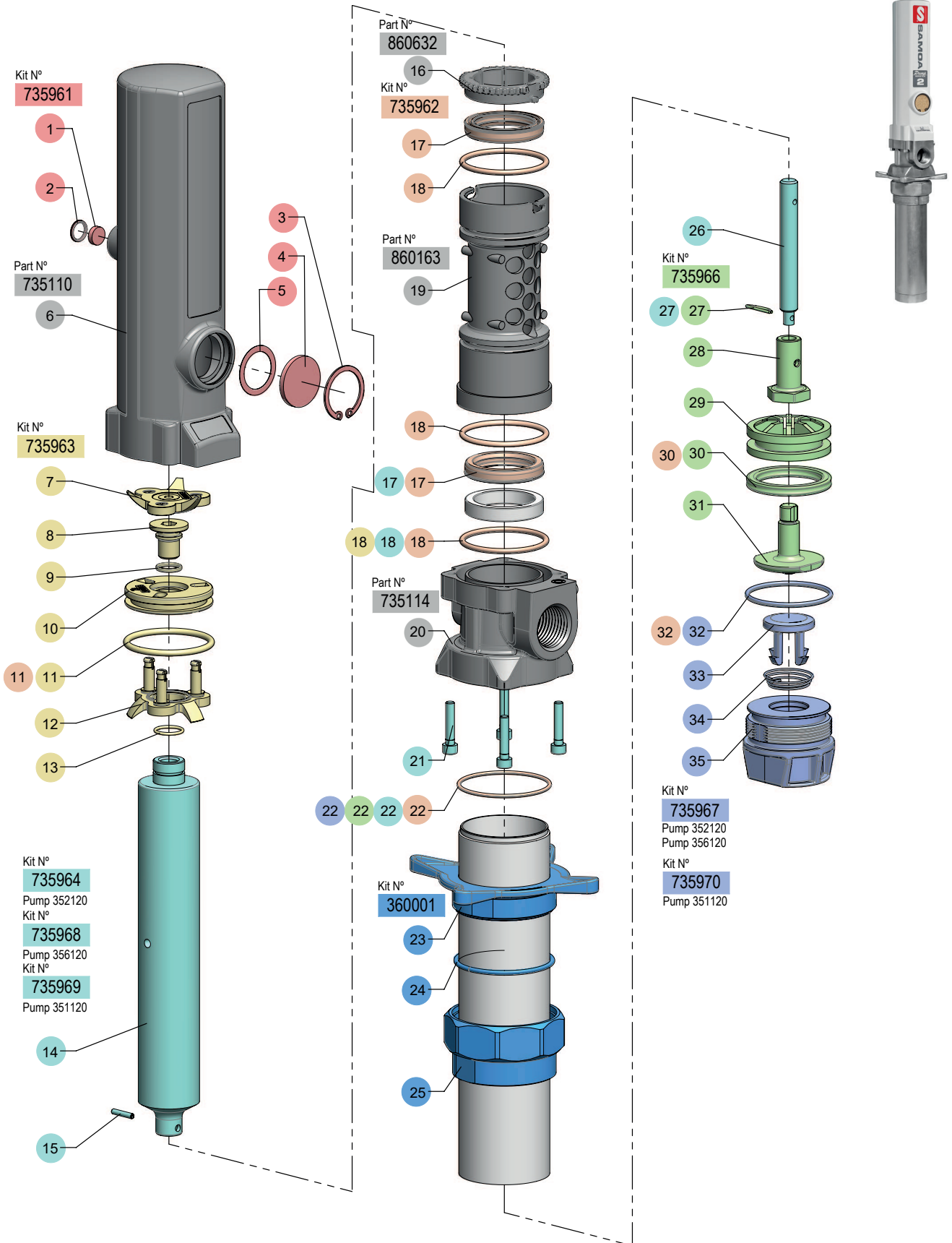


1:1 RATIO AIR OPERATED OIL PUMPS PM2
 BOMBAS NEUMÁTICAS DE ACEITE PM2, RATIO 1:1
 POMPE PNEUMATIQUE À HUILE PM2, RAPPORT 1:1
 DRUCKLUFTBETRIEBENE ÖLPUMPE PM2, VERHÄLTNIS 1:1

Part #
351120
352120
356120



KITS

Part #	Pos.	Description	Descripción	Description	Beschreibung	For / Para Pour / Für
360001	23, 24, 25	Bung Adaptor Kit	Kit Adaptador Deslizante	Kit Adaptateur Coulissant	Fassverschraubung	-
735961	1, 2, 3, 4, 5	Muffler And Filter Kit	Kit Silencioso y Filtro	Kit Silencieux et Filtre	Schalldämpfer-Filter Kit	-
735962	11, 2x(17), 3x(18), 22, 30, 32	Body Seals Kit	Kit Empaquetadura Aire y Aceite	Kit de Joints Air-Huile	Öl-Luftdichtungen Kit	-
735963	7, 8, 9, 10, 11, 12, 13, 18	Air Motor Kit	Kit Motor de Aire	Kit de Moteur Pneumatique	Luftmotor Kit	-
735966	22, 27, 28, 29, 30, 31	Pump Piston Kit	Kit Pistón de Bomba	Kit Piston Pompe	Saugrohr-Kolben Kit	-
735964	14, 15, 17, 18, 4x(21), 22, 26, 27	Fluid Plunger Kit	Kit Vástago	Kit de Tige	Saugrohr Kit	352120
735968	14, 15, 17, 18, 4x(21), 22, 26, 27	Fluid Plunger Kit	Kit Vástago	Kit de Tige	Saugrohr Kit	356120
735969	14, 15, 17, 18, 4x(21), 22, 26, 27	Fluid Plunger Kit	Kit Vástago	Kit de Tige	Saugrohr Kit	351120
735967	32, 33, 34, 35	Foot Valve Kit	Kit Válvula de Pie	Kit Clapet Inferieur	Fussventil Kit	352120 356120
735970	32, 33, 34, 35	Foot Valve Kit	Kit Válvula de Pie	Kit Clapet Inferieur	Fussventil Kit	351120

PARTS

Part #	Pos.	Description	Descripción	Description	Beschreibung	Info
735110	6	Air Motor Dolly	Cazoleta	Chariot Moteur Pneumatique	Luftmotorhaube	-
735114	21	Pump Body	Cuerpo Bomba	Corps Pompe	Pumpenkörper	-
860163	19	Seal Carrier	Casquillo	Support De Joint	Pumpenhülse	-
860632	16	Seal Carrier Retaining Ring	Guía-Tope Collarín	Bague De Retenue du Porte-Joint	Sicherung	-