

# MINING & CONSTRUCTION

HEAVY-DUTY LUBRICATION EQUIPMENT



CONTROL MASTER®

PUMP MASTER®

REEL MASTER®

LUBE MASTER®



*Headquarters Offices and Technical Centre in Gijón (Spain).*

## SAMOA QUALITY AND LEADERSHIP

### FLUID HANDLING TECHNOLOGY

SAMOA, a privately owned company, is a leading European manufacturer of Lubrication and Fluid Handling Equipment. SAMOA products are used for transfer, dispensing, dosing and recovery. SAMOA designs and manufactures a wide program that includes air operated piston and diaphragm pumps, volume flow meters, delivery guns, electronic components for inventory control systems, hose reels, hand pumps and accessories.

### PRODUCT DEVELOPMENT

Product research and development is a fundamental part of SAMOA's philosophy. We are in permanent contact with the market to identify new customer needs, that we satisfy with product improvements and new products.

### MANUFACTURING

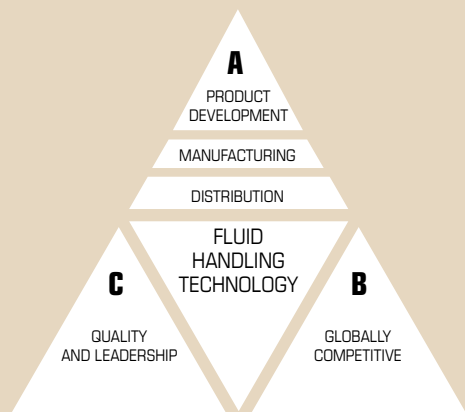
SAMOA's headquarters have been in Gijón, on the Spanish North Coast, for over 55 years. SAMOA's manufacturing facilities are modern and are equipped with the latest state-of-the art production equipment and technology. We are committed to design and manufacturing excellence, environmental sustainability and a healthy and safe workplace; our work processes and facilities are consequently ISO 9001, ISO 14001 and OHSAS 18001 certified.

### DISTRIBUTION

Our products are available through a network of knowledgeable distributors and owned Distribution Companies. This global network provides a sales and consulting service, to identify the products that best meet each customer's needs and, when required, offers after sales service to ensure the long and satisfactory use of our equipment.

### GLOBALLY COMPETITIVE

Our continuous product improvement process ensures that our products meet customer requirements worldwide, even in the most demanding applications and environments. As a result, we are proud to say that SAMOA products are reliably working away, night and day, in more than 100 countries.



*Research & Development and Manufacturing facility in Gijón (Spain)*





## R&D

### RESEARCH AND DEVELOPMENT

SAMOA's R&D Department is at the cutting edge of Lubrication Equipment and Fluid Handling product development programs with innovative technology concepts.

### PRODUCT DESIGN & ENGINEERING

Product designs are created and rough product engineering is ensured by using 3D CAD. CAD-CAM manufacturing equipment dedicated to prototyping and a well equipped test laboratory, allow fast product evolution and the release of optimized and fully proven products to market.

## MANUFACTURING

### STATE OF THE ART MANUFACTURING

High volume CNC manufacturing equipment is fed by robots. The robotized material handling processes incorporate part cleaning and 100% automated part inspection. Sheet metal processing is also highly automated and it includes welding robots, laser cutting and CNC bending machines among others.



### COMPONENTS FINISHING

Once components are manufactured and passed inspection procedures, they are finished

before they are assembled into final products. Products are polyester powder coated, zinc or nickel plated depending on their functionality and finishing requirements.



### UNWAVERING COMMITMENT TO QUALITY

Components are inspected during their manufacturing process following SPC standard and many sub-assemblies are 100% functionally tested. Many products, including all air operated pumps and meters, are run wet and taken through a carefully defined test procedure to ensure zero defects on shipment.

## CUSTOMER SERVICE

### RAPID AND RELIABLE ORDER FULFILMENT

SAMOA's experienced customer service staff and worldwide distributors can recommend the Lubrication Equipment System that best meets each application need.

A generous inventory of finished products and parts allows short delivery times. High rotation products are stored in an automated warehouse integrated with the ERP system.

Prompt after-sales service and immediate spare parts availability ensure a long and trouble-free product life.



# SAMOA PROVIDING YOU EFFICIENT SOLUTIONS

SAMOA provides solutions for dispensing all fluids used in vehicle service facilities and in Construction and Mining needs. Lubricants, grease, water, windshield wash, antifreeze and coolant solutions, AdBlue®/DEF, diesel, etc. From simple single point dispense systems or mobile packages to the most sophisticated installations, our solutions include all necessary components for pumping, distributing and controlling all fluids in your facility.

CONTROL MASTER®

PUMP MASTER®

REEL MASTER®

LUBE MASTER®



**NEX.U**  
FLUID MANAGEMENT SYSTEM



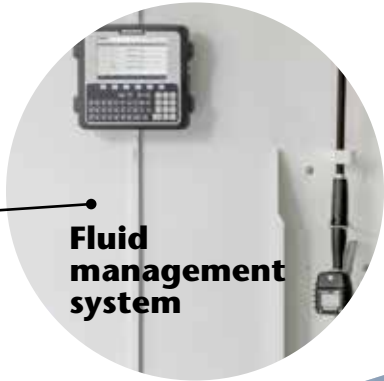
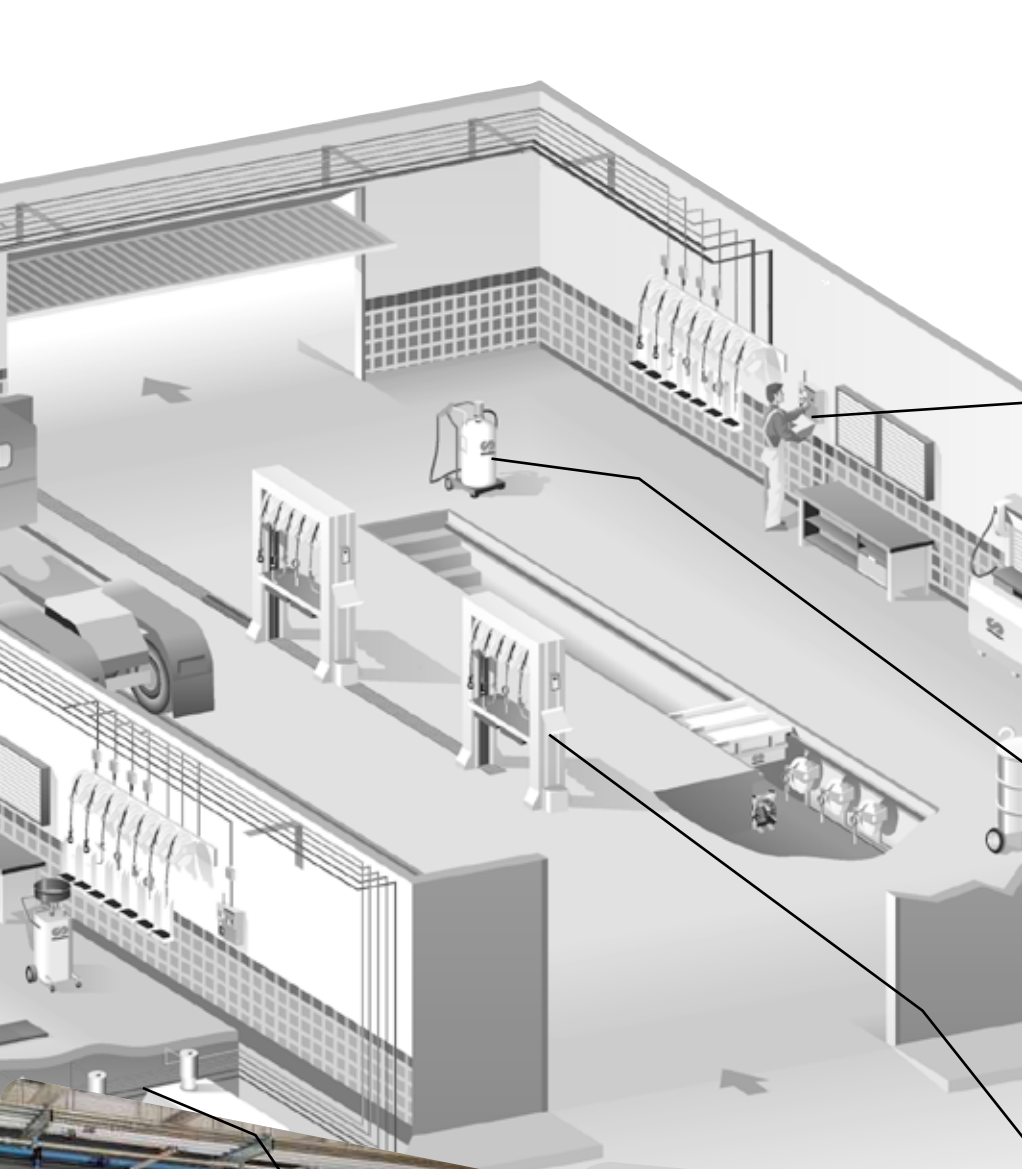
**Fluid management system**

**Control valves**



**Used fluid kits**

**HEAVY-DUTY CONSTRUCTION AND HIGH PERFORMANCE EQUIPMENT  
DESIGNED FOR THE TOUGHEST ENVIRONMENTS**



**Fluid  
management  
system**



**Oil and grease dispensers**



**Tank room**



**Tank room**



**Hose reels**

# KEEPING THE FLUID TRACK

CONTROL MASTER®

**NEX·U.**  
FLUID MANAGEMENT SYSTEM



*Fluid Management System that puts you in total control of the fluids used in your workshop.*

## CONTROL USED AND NEW FLUIDS



Lubricants - AdBlue® / DEF - Windshield wash - Coolants - Diesel - Grease

## EVERY YEAR A LARGE VOLUME OF LUBRICANTS AND OTHER SERVICE FLUIDS ARE PURCHASED...

- > DO YOU KNOW HOW IT IS USED?
- > DO YOU KNOW HOW MUCH IS LOST?
- > DO THE VOLUMES PURCHASED RECONCILE WITH THE VOLUMES SOLD?

## IF YOU CANNOT ANSWER ANY OF THESE QUESTIONS, THEN YOU NEED TO TRACK YOUR FLUIDS.

- ✓ **NEX·U.®**: connects you with efficient, simple and modern fluid tracking.
- ✓ **NEX·U.®**: Every drop counts.
- ✓ **NEX·U.®**: Real time, permanent inventory control. Set alarm and re-ordering levels for no running out of fluids.

## NEX·U.® ADAPTS TO YOUR OPERATION

- System access through a keypad, oil gun module or any computer terminal, laptop, tablet or smartphone used as a virtual keypad.
- Power to open solenoid valves is always wired, no batteries.
- Data transmission can be wireless or wired, to better meet your needs.
- Does not need installation in any of your computers or server.
- Web based software, accessible to all terminals connected.
- NEX·U.® mobile allows fluid inventory and usage control in mobile service trucks.

## DMS CONNECTION

More secured transactions: validate various job order fields and integrate transaction details.

# FLUID MANAGEMENT SYSTEM



Profitability,  
satisfies  
everyone's  
needs

## EFFICIENT FLUID MANAGEMENT FOR:

- HEAVY-DUTY MAINTENANCE
- FLEET CENTERS
- LUBE TRUCKS AND MOBILE SERVICE CENTRES
- AUTOMOTIVE SERVICE CENTERS AND CAR DEALERS

## MAIN COMPONENTS



### Unet

Single board computer controls the system and contains the U-track web based software.



### Uvalve

All in one pulse meter, solenoid valve, filter and electronic module with display.



### Udat

System keypad with a full colour, touch screen and a full QWERTY keypad provides full access to NEX-U.® and U-track.



### Uvision

Handheld displays. U-vision+ also includes system access keypad.



### Utank

Provides real-time inventory control and manages different alarm points.



# AIR OPERATED OIL PUMPS AND KITS

PUMP MASTER®

- > WIDE RANGE OF OIL PUMPS TO SELECT THE APPROPRIATE ONE FOR YOUR APPLICATION
- > CHOOSE THE RIGHT PUMP TO ENSURE A DURABLE AND RELIABLE SERVICE



Occasional-Duty Pumps

Standard-Duty Pumps

Heavy-Duty Pumps

Heavy-Duty Pumps

Heavy-Duty Pumps

PUMP MASTER 2 - 1:1	PUMP MASTER 4 - 3:1 PUMP MASTER 4 - 5:1	PUMP MASTER 35 - 5:1 PUMP MASTER 35 - 8:1	PUMP MASTER 45 - 3:1 PUMP MASTER 45 - 6:1 PUMP MASTER 45 - 10:1	PUMP MASTER 60 - 6:1 PUMP MASTER 60 - 12:1
Utility Transfer pump up to 30 m with 1 outlet (no reels)	Pump Master 4 - 3:1 up to 60 m with 1 - 2 outlets  Pump Master 4 - 5:1 up to 150 m with 1 - 2 outlets	Pump Master 35 - 5:1 Performance pump up to 150 m with 2 - 4 outlets  Pump Master 35 - 8:1 Pressure pump up to 200 m with 2 - 4 outlets	Pump Master 45 - 3:1 Volume Transfer pump up to 75 m with 3 - 4 outlets  Pump Master 45 - 6:1 High Flow pump up to 160 m with 3 - 4 outlets  Pump Master 45 - 10:1 Pressure Flow pump up to 240 m with 3 - 4 outlets	Pump Master 60 - 6:1 High Delivery pump up to 160 m with 3 - 4 outlets  Pump Master 60 - 12:1 High Performance pump up to 250 m with 3 - 4 outlets



Lube truck applications



Tank mounted pump



## AIR OPERATED OIL PUMPS

- Easy Maintenance
- Quiet
- Reduced air consumption
- State-of-the-art material
- Non icing
- Designed for long and reliable life

## FLUIDS HANDLED

- Synthetic and mineral based lubricants
- Transmission fluid
- Hydraulic oil
- Gear oil

# AIR OPERATED GREASE PUMPS AND KITS

PUMP MASTER®

- > WIDE RANGE OF GREASE PUMP TO SELECT THE APPROPRIATE ONE FOR YOUR APPLICATION
- > CHOOSE THE RIGHT PUMP TO ENSURE A DURABLE AND RELIABLE SERVICE



Utility Pumps



Heavy-Duty Pumps



Heavy-Duty Pumps



Heavy-Duty Pumps

PUMP MASTER 3 - 55:1	PUMP MASTER 35 - 60:1	PUMP MASTER 45 - 25:1 PUMP MASTER 45 - 40:1 PUMP MASTER 45 - 70:1	PUMP MASTER 60 - 12:1 PUMP MASTER 60 - 80:1
Utility High Pressure pump up to 50 m with 1 outlet (no reel)	Heavy-Duty High Pressure pump up to 75 m with 1 - 2 outlets	Pump Master 45 - 25:1 Heavy-Duty Pressure Transfer pump. Up to 75 m with 1 outlet (no reels).  Pump Master 45 - 40:1 Heavy-Duty High Flow pump up to 125 m with 4 or more outlets.  Pump Master 45 - 70:1 Heavy-Duty High Pressure pump up to 175 m with 4 or more outlets.	Pump Master 60 - 12:1 Heavy-Duty Volume Transfer pump up to 50 m with 1 outlet.  Pump Master 60 - 80:1 Heavy-Duty High Performance pump up to 250 m with 4 or more outlets.
NLGI-2	NLGI-2	NLGI-1 / NLGI-2	NLGI-2



Grease portable units



Grease mobile units

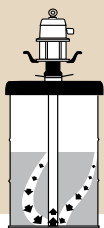


Tank horizontal mounted pump kit

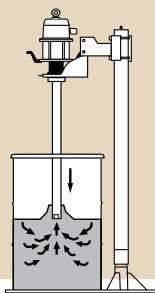


## AIR OPERATED GREASE PUMPS

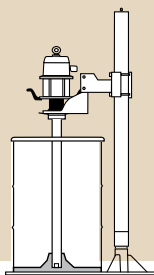
- Easy maintenance
- Quiet, non icing
- Reduced air consumption
- State of the art material
- Designed for long and reliable life
- Pump systems with pneumatic inductor available



No inductor.  
Air pockets and channels  
can be formed.



With inductor plate.  
Pump is permanently  
primed.



Inductor plates aid to  
minimize waste left in  
the drum.

## FLUIDS HANDLED

- High viscosity oil
- Grease up to NLGI-3
- Tail grease

SAMOA offers a complete range of accessories.



For additional information, please see our  
General Catalogue.

# AIR OPERATED DOUBLE DIAPHRAGM PUMPS

> WIDE RANGE OF DIAPHRAGM PUMPS FOR:

DISPENSING  
TRANSFERRING  
EVACUATING

**directflo**  
Central flow technology



## DIFFERENT TYPES OF NEW AND USED FLUIDS

- Oils
- Antifreeze, coolant
- Windshield wash
- Hydraulic fluids
- Brake fluid
- Diesel
- Hydraulic fluid / Skydrol (airplane)
- AdBlue® / DEF
- Water
- Waste oil
- Waste antifreeze

## PLASTIC PUMPS



**1/2"**  
**50 l/min**



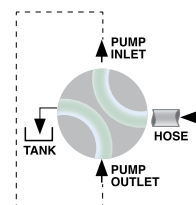
**1"**  
**100 l/min**



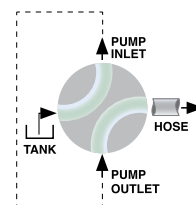
**1"**  
**200 l/min**



**Four way valves** simplify plumbing and allow the use of one pump to pull and push waste fluids on/off their storage tank with the swing of a handle.



FILL TANK POSITION



EMPTY TANK POSITION

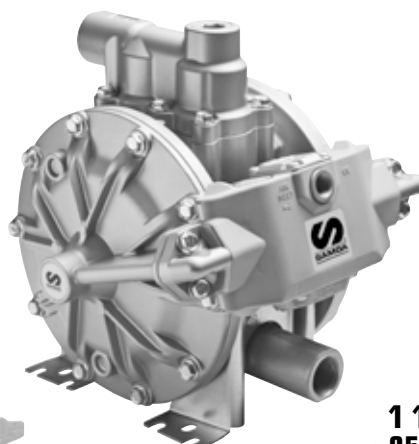
## METAL PUMPS



**1/2"**  
**50 l/min**



**1"**  
**100 l/min**



**1"**  
**200 l/min**



**1 1/2"**  
**250 l/min**

# INNOVATIVE CENTRAL FLOW TECHNOLOGY

Directflo® pumps are inside out pumps, the fluid is pumped through the centre of the pump and compressed air acts on the outside face of the diaphragms.

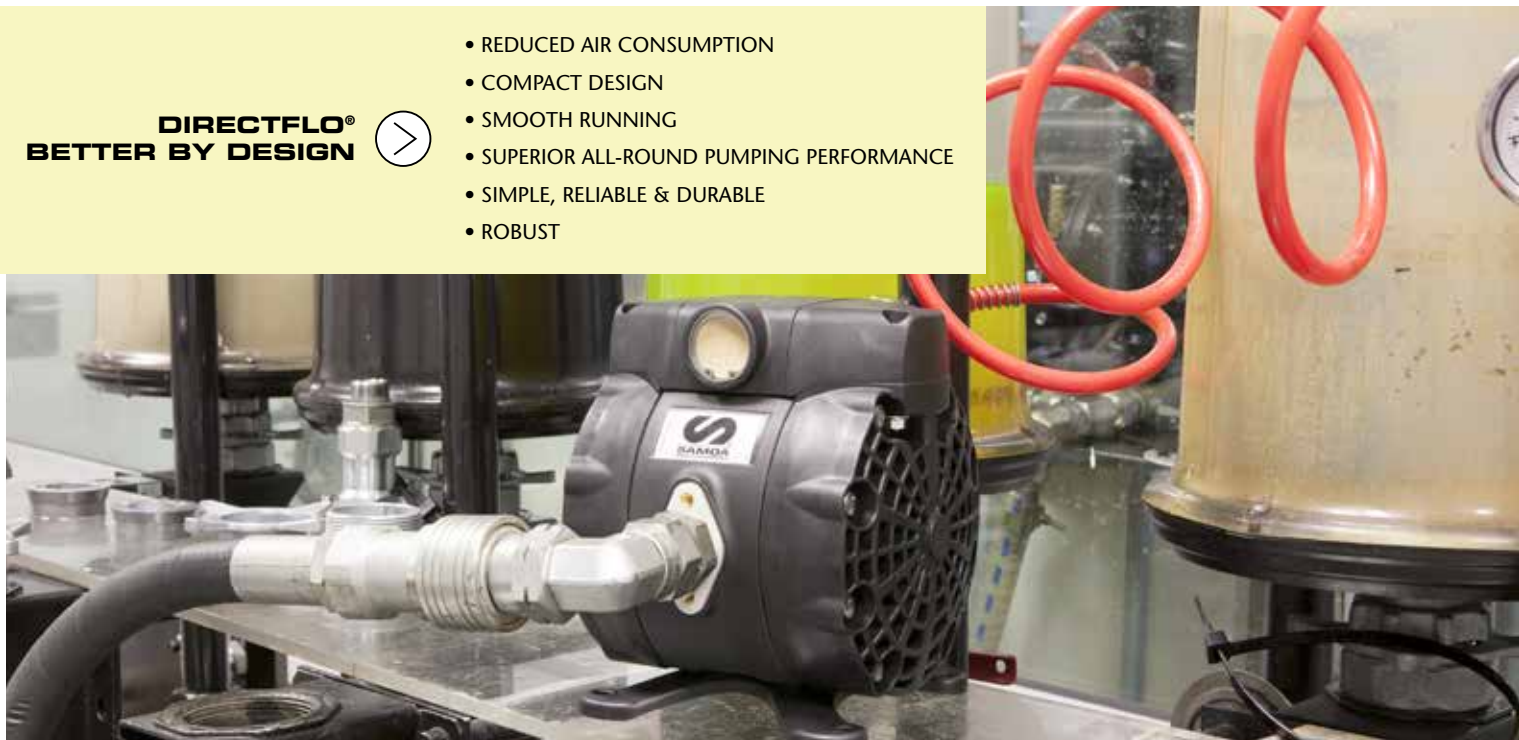
Important innovations were necessary to realise the central flow concept.



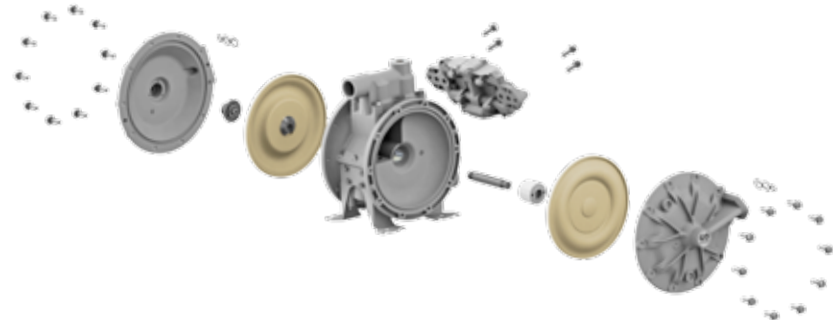
**DIRECTFLO®  
BETTER BY DESIGN**



- REDUCED AIR CONSUMPTION
- COMPACT DESIGN
- SMOOTH RUNNING
- SUPERIOR ALL-ROUND PUMPING PERFORMANCE
- SIMPLE, RELIABLE & DURABLE
- ROBUST



## QUICK AND SIMPLE MAINTENANCE

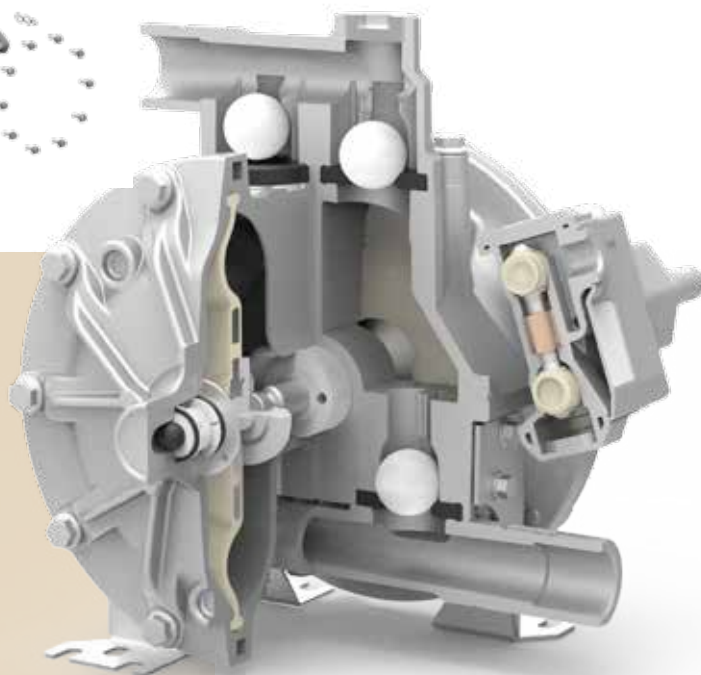


## AIR OPERATED DOUBLE DIAPHRAGM PUMPS

- Easy maintenance
- Smooth running
- Reduced air consumption
- Superior pumping performance
- Simple - Reliable - Durable
- Robust

## FLUIDS HANDLED

- Oils
- Antifreeze, coolant
- Windshield wash
- Hydraulic fluids
- Brake fluid
- Diesel
- AdBlue® / DEF
- Water
- Waste oil
- Waste antifreeze



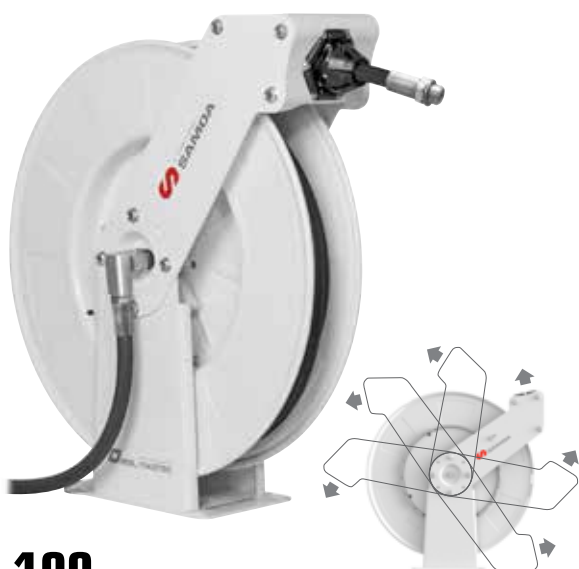
# HEAVY-DUTY HOSE REELS

REEL MASTER®

- > PREMIUM QUALITY FLUID REELS
- > INCREASE PRODUCTIVITY AND SAFETY • INCREASE HOSE LIFE • SIMPLE HOSE HANDLING AND STORAGE • WORK ENVIRONMENT IMPROVEMENT

## RM-12L

Low, medium and high pressure fluids. Up to 15 m x 1/2" hose.



## RM-100

Low, medium pressure fluids. Up to: 15 m x 1" hose, 20 m x 3/4" hose, 25 m x 3/4" hose or 30 m x 1/2" hose.



## RM-34

Low, medium and high pressure fluids. Up to 15 m x 3/4" hose or 20 m x 1/2" hose.



## RM-150

Low pressure fluids, extra large delivery up to 15 m x 1 1/2" hose.





## HEAVY-DUTY HOSE REELS

- Superior power spring life and trouble free operation
- Heavy-Duty ratchet with user friendly operation metal structure
- Base and spool polyester powder coated for increased wear resistance
- Lubricated ball bearings on spool

## FLUIDS HANDLED

- Air
- Water
- Antifreeze
- Windshield wash
- Synthetic and mineral oil
- AdBlue®
- Waste oil
- Diesel
- Grease
- Hydraulic fluid

*SAMOA offers a complete range of accessories for hose reel installations*



# CONTROL VALVES AND METERS

> METERS AND CONTROL VALVES ENGINEERED  
FOR DURABILITY UNDER THE TOUGHEST CONDITIONS

CONTROL MASTER®



## CONTROL MASTER **EC70** HIGH-FLOW ELECTRONIC METER CONTROL VALVE

For all types of lubricants high flow applications.

**70 l/min** nominal flow rate.



## CONTROL MASTER **PA70** HIGH-FLOW CONTROL VALVE

For all types of lubricants and antifreeze.

**90 l/min** nominal flow rate.



## CONTROL MASTER **EC30** ELECTRONIC-METER CONTROL VALVE

For all types of lubricants and antifreeze.

**30 l/min** nominal flow rate.

In & outlet protectors.



## CONTROL MASTER **PA40** CONTROL VALVE

For all types of lubricants and antifreeze.

**40 l/min** nominal flow rate.

In & outlet protectors.



Several colour protectors available for fluid differentiation. For mounting at the EC30 and PA40 gun outlets.

# CONTROL VALVES AND METERS

> METERS AND CONTROL VALVES ENGINEERED  
FOR DURABILITY UNDER THE TOUGHEST CONDITIONS

CONTROL MASTER®



## CONTROL MASTER **MC30** MECHANICAL-METERED CONTROL VALVE

For all types of lubricants and antifreeze. Ideal for outdoor applications.

**30 l/min** nominal flow rate.  
Inlet protector.



## CONTROL MASTER **MP30** MECHANICAL-METERED PRESET CONTROL VALVE

For all types of lubricants. Ideal for outdoor applications.

**30 l/min** nominal flow rate.  
Inlet protector.



## CONTROL MASTER **PG77** GREASE CONTROL VALVE

Grease control valve



## CONTROL VALVES AND METER

- Extensively and rigorously field tested for reliable performance
- Designed for tough environments.
- High accuracy
- Ergonomic design
- Inlet filter with large screen surface
- Large selection of outlets available
- Easy to replace AAA alkaline batteries

## FLUIDS HANDLED

- Oil
- Grease
- Coolant
- Antifreeze

# WASTE OIL MANAGEMENT

> RESPONSIBLE AND EFFICIENT WASTE FLUID MANAGEMENT

LUBE MASTER®



## LOW LEVEL MOBILE DRAINER

95 litres. Low level mobile drainer.

For use with vans, trucks, tractors, mining and construction vehicles.



## WASTE OIL DRAIN AND EVACUATION PUMP KITS

DF100 double diaphragm pump kit (100 l/min) for discharging waste oil drainers through a hydraulic coupler.

DP200 double diaphragm pump kit (200 l/min) for discharging waste oil.

DF250 double diaphragm pump kit (250 l/min) for discharging waste oil.



# LUBRICATION AND FLUID HANDLING

> SAMOA OFFERS A WIDE RANGE OF HAND OPERATED PRODUCTS TO SOLVE THE SIMPLEST NEEDS

PRO MASTER®

## BATTERY GREASE PUMPS

18 V



450 bar



18 V



## LEVER ACTION GREASE PUMPS

500 cc



## PISTOL GRIP GREASE PUMPS

500 cc



## BUCKET PUMPS

16 Litres



Cartridge loading



Loading with filler pump (using filler valve: 128 003)

## ROTARY DRUM PUMPS



## HIGH PERFORMANCE DRUM PUMPS



## LEVER ACTION DRUM PUMPS



PART No.

OIL PUMPS	PM2 PUMPS			PM4 PUMPS				PM35 PUMPS	
PART No.	351 120	356 120	352 120	340 120	341 120	347 120	348 120	535 530	535 510
APPLICATION	Stub pump	60 l drum pump	205 l drum pump	Stub pump	205 l drum pump	Stub pump	205 l drum pump	Universal stub pump	205 l drum bung mounted
PUMP TUBE HEIGHT	215 mm	700 mm	915 mm	200 mm	910 mm	278 mm	915 mm	186 mm	910 mm
TOTAL HEIGHT	500 mm	985 mm	1.200 mm	585 mm	1.295 mm	663 mm	1.300 mm	461 mm	1.185 mm
PUMP PRESSURE RATIO	1:1			3:1		5:1		5:1	
AIR PRESSURE OPERATING RANGE	1,5 - 10 bar			1,5 - 10 bar		1,5 - 10 bar		2 to 12 bar	
AIR CONSUMPTION <sup>(1)</sup>	150 NL/min			285 NL/min		400 NL/min		350 NL/min	
MAXIMUM FLUID OUTLET PRESSURE	10 bar			30 bar		50 bar		60 bar	
AIR MOTOR DIAMETER	51 mm			88 mm		88 mm		80 mm	
AIR MOTOR EFFECTIVE DIAMETER	35 mm			60 mm		60 mm		80 mm	
AIR MOTOR STROKE	75 mm			100 mm		100 mm		80 mm	
DELIVERY	20 l/min at 150 cpm			10 l/min at 85 cpm		10 l/min at 125 cpm		12 l/min at 80 cpm	
MAXIMUM FREE FLOW DELIVERY <sup>(2)</sup>	52 l/min			42 l/min		25 l/min		30 l/min	
AIR INLET	1/4" BSP (F)			3/8" BSP (F)		3/8" NPSM		3/8" BSP (F)	
FLUID INLET (SHORT PUMP ONLY)	1" BSP (F)			1" BSP (F)		1" BSP (F)		1 1/2" BSP (F)	
FLUID OUTLET	3/4" BSP (F)			3/4" BSP (F)		3/4" NPSM		1/2" BSP (F)	
NOISE LEVEL <sup>(3)</sup>	80 dB			93 dB		95 dB		80 dB	

(1) Air consumption with 6 bar air inlet pressure and with PM2 - 1:1 150 cpm, PM4: 10 l/min and PM35 - 5:1: 80 cpm.  
(2) Maximum free delivery at 7 bar (PM35 - 5:1 at 5 bar).  
(3) Maximum noise level measured at 1 m from the pump, 7 bar air pressure and free delivery.

OIL PUMPS	PM35 PUMPS		PM45 PUMPS				PM60 PUMPS	
PART No.	535 830	535 810	536 330	536 630	536 030	205 l drum pump	537 630	537 130
APPLICATION	Stub pump	205 l drum bung mounted	Stub pump	Stub pump	Stub pump	205 l drum pump	Stub pump	Stub pump
PUMP TUBE HEIGHT	158 mm	910 mm	200 mm	200 mm	200 mm	855 mm	200 mm	200 mm
TOTAL HEIGHT	445 mm	1.169 mm	702 mm	702 mm	702 mm	1.357 mm	716 mm	716 mm
PUMP PRESSURE RATIO	8:1		3:1	6:1	10:1		6:1	12:1
AIR PRESSURE OPERATING RANGE	2 to 12 bar		1,5 to 12 bar	1,5 to 12 bar	1,5 to 12 bar		1,5 to 12 bar	1,5 to 12 bar
AIR CONSUMPTION <sup>(1)</sup>	350 NL/min		800 NL/min	830 NL/min	850 NL/min		1.100 NI	1.150 NI
MAXIMUM FLUID OUTLET PRESSURE	96 bar		36 bar	72 bar	120 bar		72 bar	144 bar
AIR MOTOR EFFECTIVE DIAMETER	80 mm		115 mm	115 mm	115 mm		150 mm	150 mm
AIR MOTOR STROKE	80 mm		100 mm	100 mm	100 mm		100 mm	100 mm
DELIVERY AT 80 CPM (PM60 AT 60 CPM)	7 l/min		45 l/min	25 l/min	15 l/min		35 l/min	20 l/min
MAXIMUM FREE FLOW DELIVERY	17 l/min		120 l/min	95 l/min	65 l/min		100 l/min	65 l/min
AIR INLET	3/8" BSP (F)		1/2" BSP (F)	1/2" BSP (F)	1/2" BSP (F)		1/2" BSP (F)	1/2" BSP (F)
FLUID INLET	1" BSP (F)		1 1/2" BSP (F)	1 1/2" BSP (F)	1 1/2" BSP (F)		1 1/2" BSP (F)	1 1/2" BSP (F)
FLUID OUTLET	1/2" BSP (F)		3/4" BSP (F)	3/4" BSP (F)	3/4" BSP (F)		3/4" BSP (F)	3/4" BSP (F)
NOISE LEVEL <sup>(2)</sup>	80 dB		80 dB	80 dB	80 dB		80 dB	80 dB

(1) Maximum air consumption with 5 bar air inlet pressure and 80 cpm (PM60: 60 cpm).  
(2) Maximum noise level measured at 1 m from the pump, 7 bar air pressure and free delivery.

OIL PUMP KITS						
PART No.	DESCRIPTION	HOSE	DELIVERY GUN		APPROX. DELIVERY	
454 110	3:1 transfer metered package	3 m x 1/2" (362 103)	Hose end meter 365 535		12 l/min	
454 111	3:1 transfer package	3 m x 1/2" (362 103)	Oil control gun 363 115		15 l/min	
454 100	Transfer pump with spigot valve	-	Oil spigot valve 361 100 and tray 736 462		23 l/min	
454 150	3:1 transfer pump + IBC side bracket <sup>(2)</sup>	6 m x 1/2" (362 106)	Hose end meter 365 535		12 l/min	
OIL MOBILE UNITS						
PART No.	APPLICATION	PUMP	HOSE END METER	DELIVERY HOSE	TROLLEY	OTHER ACCESSORIES
370 400	50 l drum	358 120	365 535	3 m x 1/2" 362 103	431 000	Drum cover 418 010
328 010	Self contained, 70 l	358 120	365 535	3 m x 1/2" 362 103	373 310	Self contained 70 l tank
376 300	205 l drum	354 120	365 535	3 m x 1/2" 362 103	432 000	-
376 610	205 l drum	353 120	365 535	3 m x 1/2" 362 103	432 814	Suction hose 367 011
378 120	205 l drum	353 120	365 535	10 m reel 506 202	432 814	Suction hose 367 011

GREASE PUMPS	PM3 PUMPS				PM35 PUMPS		
PART No.	404 100	405 100	407 200	409 200	530 610	530 620	530 630
APPLICATION	12,5 - 20 kg pails	50 kg drums	50 kg drums	185 kg drums	185 kg drum	50 kg	12,5 - 20 kg
PUMP TUBE HEIGHT	410 mm	510 mm	725 mm	920 mm	925 mm	730 mm	516 mm
TOTAL HEIGHT	650 mm	710 mm	925 mm	1.120 mm	1.212 mm	1.017 mm	803 mm
PUMP PRESSURE RATIO	55:1				60:1		
AIR PRESSURE OPERATING RANGE	1,5 to 10 bar				2 to 10 bar		
AIR CONSUMPTION <sup>(1)</sup>	165 NL/min				450 NL/min		
MAXIMUM FLUID OUTLET PRESSURE	550 bar				600 bar		
AIR MOTOR DIAMETER	70 mm				80 mm		
AIR MOTOR STROKE	35 mm				80 mm		
DELIVERY	300 g/min at 110 cpm				900 g/min at 80 cpm		
MAXIMUM FREE FLOW DELIVERY <sup>(2)</sup>	540 g/min				2 kg/min		
AIR INLET	1/4" NPSM (F)				3/8" BSP (F)		
FLUID OUTLET	1/4" NPSM (F)				3/8" BSP (F)		
NOISE LEVEL <sup>(3)</sup>	92 dB				80 dB		

(1) Maximum air consumption with 6 bar air inlet pressure, NLGI-2 grease at 20 °C and 100 cpm. (PM35, 5 bar and 80 cpm).  
(2) Maximum free delivery at 7 bar. NLGI-2 grease.  
(3) Maximum noise level measured at 1 m from the pump, 7 bar air pressure and free delivery.

PART No.

GREASE PUMPS	PM45 PUMPS						
PART No.	531 210	531 410	531 420	531 430*	531 710	531 720	531 730*
APPLICATION	185 kg drum	185 kg drum	50 kg drum	Bulk tote	185 kg drum	50 kg drum	Bulk tote
PUMP TUBE HEIGHT	855 mm	855 mm	650 mm	490 mm	855 mm	650 mm	490 mm
TOTAL HEIGHT	1.357 mm	1.357 mm	1.152 mm	992 mm	1.357 mm	1.152 mm	992 mm
PUMP PRESSURE RATIO	25:1	40:1			70:1		
CONTINUOUS DUTY FLOW RATE	6 kg/min	3,5 kg/min			2 kg/min		
MAXIMUM FREE FLOW	16 kg/min	11 kg/min			7,5 kg/min		
AIR PRESSURE OPERATING RANGE	1,5 to 14 bar	1,5 to 14 bar			1,5 to 7 bar		
MAXIMUM OUTLET PRESSURE	350 bar	560 bar			490 bar		
AIR MOTOR EFFECTIVE DIAMETER	115 mm	115 mm			115 mm		
AIR MOTOR STROKE	100 mm	100 mm			100 mm		
AIR CONSUMPTION <sup>(1)</sup>	1.340 NI/min	750 NI/min			925 NI/min		
AIR INLET	1/2" BSP (F)	1/2" BSP (F)			1/2" BSP (F)		
FLUID OUTLET	1/2" BSP (F)	1/2" BSP (F)			1/2" BSP (F)		
NOISE LEVEL <sup>(2)</sup>	80 dB	80 dB			80 dB		

GREASE PUMPS		PM60 PUMPS		
PART No.		532 130*	532 810	532 820
APPLICATION		Bulk tote	185 kg drum	50 kg drum
PUMP TUBE HEIGHT		226 mm	855 mm	650 mm
TOTAL HEIGHT		742 mm	1.371 mm	1.166 mm
PUMP PRESSURE RATIO		12:1	80:1	
CONTINUOUS DUTY FLOW RATE		15 kg/min	2,5 kg/min	
MAXIMUM FREE FLOW		40 kg/min	8 kg/min	
AIR PRESSURE OPERATING RANGE		1,5 to 7 bar	1.5 to 7 bar	
MAXIMUM OUTLET PRESSURE		84 bar	560 bar	
AIR MOTOR EFFECTIVE DIAMETER		150 mm	150 mm	
AIR MOTOR STROKE		100 mm	100 mm	
AIR CONSUMPTION <sup>(1)</sup>		1.100 NI/min	1.000 NI/min	
AIR INLET		1/2" BSP (F)	1/2" BSP (F)	
FLUID OUTLET		1" BSP (F)	1/2" BSP (F)	
NOISE LEVEL <sup>(2)</sup>		80 dB	80 dB	

(1) Air consumption at 5 bar air pressure, NLGI-2 grease (PM45 25-1: NLGI-0) at 20 °C and 80 cpm (PM60 at 60 cpm).

(2) Noise level measured at 1 m from the pump, 7 bar air pressure and free delivery.

\* Includes adaptor 753 110 to fit a 3" cam-lock connector for use in totes and grease bags.

GREASE PUMP KITS							
PART No.	APPLICATION	PUMP	DRUM COVER	FOLLOWER PLATE	DELIVERY HOSE	GREASE GUN WITH Z-SWIVEL	TROLLEY
424 150	Mobile unit, 12.5 to 18 kg <sup>(1)</sup>	404 100	418 013	-	2 m x 1/4" 412 102	413 080	430 000
424 152	Mobile unit, 20 kg <sup>(1)</sup>	404 100	418 002	-	2 m x 1/4" 412 102	413 080	430 000
424 170	Portable unit, 12.5 to 18 kg <sup>(1)</sup>	404 100	418 013	-	2 m x 1/4" 412 102	413 080	-
424 170.800	Portable unit, 12.5 to 18 kg <sup>(1)</sup>	404 100	418 013	417 001	2 m x 1/4" 412 102	413 080	-
424 172	Portable unit, 20 kg <sup>(1)</sup>	404 100	418 002	-	2 m x 1/4" 412 102	413 080	-
424 172.710	Portable unit, 20 kg <sup>(1)</sup>	404 100	418 002	417 001	2 m x 1/4" 412 102	413 080	-
482 200	Mobile unit, 12.5 to 20 kg <sup>(2)</sup>	404 100	-	-	2 m x 1/4" 412 102	413 080	480 021
425 150	Mobile unit, 50 kg drum	407 200	418 004	-	3 m x 1/4" 412 103	413 080	431 000
425 150.002	Mobile unit, 50 kg drum	407 200	418 004	417 002	3 m x 1/4" 412 103	413 080	431 000
425 290	Mobile unit, 50 kg drum	407 200	418 004	-	2 m x 1/4" 412 102	413 080	430 000
482 500	Mobile unit, 50 kg drum (3)	407 200	-	-	3 m x 1/4" 412 103	413 080	480 050
428 243	Mobile unit, 185 kg drum	409 200	418 006	417 004	4 m x 1/4" 412 104	413 080	432 000
428 262	Stationary unit, 185 kg drum	409 200	418 006	417 004	4 m x 1/4" 412 104	413 080	-

(1) Includes carrying handle 741 602.

(2) Shielded unit. Includes base with 4 castors.

(3) Shielded unit. Includes base with 2 wheels and 2 castors.

DOUBLE DIAPHRAGM PUMPS, DIRECTFLO® PLASTIC SERIES					
PUMP SIZE	DF50		DF100		DP200
PART No.	552 164	552 162	551 164	551 162	555 115
PUMP PRESSURE RATIO	1:1		1:1		1:1
MAXIMUM FREE DELIVERY <sup>(1)</sup>	50 l/min		100 l/min		200 l/min
DELIVERY PER STROKE APPROX. <sup>(1)</sup>	0,1 litres		0,25 litres		0,50 litres
DELIVERY PER CYCLE (2 X STROKES) <sup>(1)</sup>	0,2 litres		0,50 litres		1 litre
AIR PRESSURE OPERATING RANGE	1,5 to 8 bar		1,5 to 8 bar		1,5 to 8 bar
SOLIDS IN SUSPENSION MAX. SIZE	3 mm		4 mm		6 mm
MAXIMUM DRY SUCTION HEAD <sup>(1)</sup>	6 m		4,5 m		5 m
MAXIMUM WET SUCTION HEAD <sup>(1)</sup>	8 m		7 m		8 m
WEIGHT	2,2 kg		5,1 kg		10,5 kg
FLUID INLET CONNECTION	1/2" BSP (F)		1" BSP (F)		1" Flange
FLUID OUTLET CONNECTION	1/2" BSP (F)		1" BSP (F)		1" Flange
AIR INLET CONNECTION	3/8" NPSM (F)		3/8" NPSM (F)		3/8" NPSM (F)
PUMP BODY	Polypropylene	Conductive Polypropylene	Polypropylene	Conductive Polypropylene	Polypropylene
DIAPHRAGMS	TPE	PTFE	TPE	PTFE	TPE
BALLS	PTFE	PTFE	PTFE	PTFE	PTFE
OTHER WETTED PARTS	FKM, Stainless steel	FKM, Stainless steel	FKM, Stainless steel	FKM, Stainless steel	FKM, Stainless steel
APPLICATIONS	Antifreeze and windshield wash solutions, AdBlue® / DEF	⊗ ATEX pump for pure ethanol, pure windshield wash	Antifreeze and windshield wash solutions, AdBlue® / DEF	⊗ ATEX pump for pure ethanol, pure windshield wash	Antifreeze and windshield wash solutions, AdBlue® / DEF

(1) Data measured with water, air inlet pressure 7 bar (100 psi), 20 °C (68 °F).

If you want to see our complete range of products, kits or accessories, you can consult our General Catalogue

PART No.

DOUBLE DIAPHRAGM PUMPS, DIRECTFLO® METAL SERIES								
PUMP SIZE	DF50		DF100		DP200		DF250	
PART No.	552 010	551 010	551 030	555 010	555 030	554 010	554 020	
PUMP PRESSURE RATIO	1:1	1:1		1:1		1:1		
MAXIMUM FREE DELIVERY <sup>(1)</sup>	50 l/min	100 l/min		200 l/min		250 l/min		
DELIVERY PER STROKE APPROX. <sup>(1)</sup>	0,1 litres	0,25 litres		0,5 litres		0,6 litres		
DELIVERY PER CYCLE (2 X STROKES) <sup>(1)</sup>	0,2 litres	0,50 litres		1 litre		1,2 litres		
AIR PRESSURE OPERATING RANGE	1,5 to 8 bar	1,5 to 8 bar		1,5 to 8 bar		1,5 to 8 bar		
SOLIDS IN SUSPENSION MAX. SIZE	3 mm	4 mm		6 mm		6 mm		
MAXIMUM DRY SUCTION HEAD <sup>(1)</sup>	6 m	4,5 m		5 m		5 m		
MAXIMUM WET SUCTION HEAD <sup>(1)</sup>	8 m	7 m		8 m		8 m		
WEIGHT	3,5 kg	7,2 kg		11,5 Kg		20 kg		
FLUID INLET CONNECTION	1/2" BSP (F)	1" BSP (F)		1" BSPP (F)		1 1/2" BSP (F) and DIN PN-10 flange		
FLUID OUTLET CONNECTION	1/2" BSP (F)	1" BSP (F)		1" BSPP (F)		1 1/2" BSP (F) and DIN PN-10 flange		
AIR INLET CONNECTION	3/8" NPSM (F)	3/8" NPSM (F)		3/8" NPSM (F)		1/2" NPSM (F)		
PUMP BODY	Aluminium	Aluminium		Aluminium		Aluminium		
DIAPHRAGMS	TPE	TPE	NBR	TPE	NBR	TPE	PTFE	
BALLS	Acetal	Acetal	NBR	Acetal	Acetal	Acetal		
OTHER WETTED PARTS	PTFE, NBR, Stainless steel	PTFE, NBR, Stainless steel	PTFE, Stainless steel	NBR, Stainless steel	Stainless steel	NBR, Stainless steel	FKM, Stainless steel	
APPLICATIONS	Antifreeze and windshield wash solutions, lubricants	Antifreeze and windshield wash solutions, lubricants, diesel	Special for waste oil and diesel evacuation	Antifreeze, lubricants, diesel.	Special for waste oil and diesel evacuation	Antifreeze and windshield wash solutions, lubricants, diesel.	Diesel	

(1) Data measured with water, air inlet pressure 7 bar (100 psi), 20 °C (68 °F).

HEAVY-DUTY HOSE REELS, RM-12L SERIES							
PART No.	BARE REEL	HOSE IN Ø	HOSE LENGTH	CONNECTING HOSE INLET	DELIVERY HOSE OUTLET	PRESSURE RATING	WEIGHT (WITH HOSE)
AIR / WATER / ANTIFREEZE SOLUTIONS							
504 150	504 159	1/2"	15 m	1/2" BSP (M)	1/2" BSP (M)	20 bar	24 kg
SYNTHETIC AND MINERAL OILS							
504 250	504 259	1/2"	15 m	1/2" BSP (M)	1/2" BSP (M)	160 bar	24 kg
GREASE AND HYDRAULIC FLUID							
504 350	504 359.001	1/4"	15 m	1/4" BSP (M)	1/4" BSP (M)	400 bar	27,5 kg
504 351	504 359	3/8"	15 m	3/8" BSP (M)	1/4" BSP (M)	400 bar	26 kg
HIGH PRESSURE HOT WATER (UP TO 100 °C)							
504 450	504 459	3/8"	15 m	3/8" BSP (M)	1/4" BSP (M)	170 bar	26 kg
HEAVY-DUTY HOSE REELS, RM-34 SERIES							
AIR / WATER / ANTIFREEZE SOLUTIONS / DIESEL / LUBRICANTS							
505 232	505 932	1/2"	20 m	3/4" BSP (F)	1/2" BSP (M)	160 bar	36 kg
505 224	505 924	3/4"	15 m	3/4" BSP (M)	3/4" BSP (M)	125 bar	38 kg
ADBLUE® - DEF / WINDSHIELD WASH SOLUTIONS / WASHING SOLUTIONS							
505 524	505 529	3/4"	15 m	3/4" BSP (M)	3/4" BSP (M)	20 bar	39 kg
GREASE AND HYDRAULIC FLUID							
505 332	505 339	1/2"	20 m	1/2" BSP (M)	1/2" BSP (M)	400 bar	39 kg
HEAVY-DUTY LARGE CAPACITY HOSE REELS, RM-100 SERIES							
AIR / WATER / ANTIFREEZE SOLUTIONS / DIESEL							
508 125	508 925	1"	15 m	1" BSP (F)	1" BSP (F)	25 bar	50 kg
LUBRICANTS / WASTE OIL EVACUATION							
508 225	508 925	1"	15 m	1" BSP (F)	1" BSP (F)	90 bar	56 kg
508 234	508 924	3/4"	20 m	1" BSP (F)	3/4" BSP (F)	100 bar	55 kg
508 244	508 944	3/4"	25 m	1" BSP (F)	3/4" BSP (F)	100 bar	57 kg
508 252	508 942	1/2"	30 m	1" BSP (F)	1/2" BSP (F)	160 bar	55 kg
HEAVY-DUTY LARGE DELIVERY HOSE REELS, RM-150 SERIES							
WATER / DIESEL							
508 810	508 890	1-1/2"	15 m	1-1/2" BSP (F)	1-1/2" BSP (F)	20 bar	87 kg

ELECTRONIC METERED CONTROL VALVES FOR OIL AND OTHER FLUIDS, EC70 SERIES			
PART No.	OUTLET NOZZLE TYPE	TECHNICAL DATA	
365 655	30° rigid with semiautomatic non-drip tip, 3/4" BSP (F)	MAXIMUM FLOW RATE	70 l/min
365 654	Flexible outlet with semiautomatic non-drip tip, 3/4" BSP (F)	ACCURACY	+/- 0,5%
365 657	30° rigid with semiautomatic non drip tip, 1" BSP (F)	MAXIMUM WORKING PRESSURE	100 bar
365 656	Flexible outlet with semiautomatic non drip tip, 1" BSP (F)	OPERATING TEMPERATURE RANGE	-10 °C to 60 °C
		FLUID INLET	3/4" BSP (F) or 1" BSP (F)
		FLUID OUTLET	3/4" BSP (F)
		WETTED PARTS	Acetal, Aluminium, Stainless steel, Zinc plated steel and brass, NBR
		FLUID COMPATIBILITY	Oil
		WEIGHT	2,85 kg

# PART No.

CONTROL VALVES FOR OIL AND OTHER FLUIDS, PA70 SERIES			
PART No.	OUTLET NOZZLE TYPE	TECHNICAL DATA	
<b>363 053</b>	30° rigid with semiautomatic non-drip tip, 3/4" BSP (F)	<b>MAXIMUM FLOW RATE</b>	90 l/min
<b>363 054</b>	Flexible outlet with semiautomatic non-drip tip, 3/4" BSP (F)	<b>MAXIMUM WORKING PRESSURE</b>	100 bar
<b>363 055</b>	30° rigid with semiautomatic non drip tip, 1" BSP (F)	<b>OPERATING TEMPERATURE RANGE</b>	-10 °C to 70 °C
<b>363 056</b>	Flexible outlet with semiautomatic non drip tip, 1" BSP (F)	<b>FLUID INLET</b>	3/4" BSP (F) or 1" BSP (F)
		<b>FLUID OUTLET</b>	3/4" BSP (F)
		<b>WETTED PARTS</b>	Aluminium, Zinc plated steel and brass, NBR
		<b>FLUID COMPATIBILITY</b>	All types of synthetic and mineral oils, antifreeze solutions, hydraulic fluid
		<b>WEIGHT</b>	2,05 kg

ELECTRONIC METERED CONTROL VALVES FOR OIL AND OTHER FLUIDS, EC30 SERIES			
PART No.	OUTLET NOZZLE TYPE	TECHNICAL DATA	
<b>365 521</b>	Hose end meter with no outlet	<b>MAXIMUM FLOW RATE</b>	30 l/min
<b>365 536</b>	60° rigid with quarter turn opening non-drip tip	<b>ACCURACY</b>	+/- 0,5 %
<b>365 535</b>	Flexible outlet with 90° angled nozzle with automatic non-drip tip	<b>MAXIMUM WORKING PRESSURE</b>	100 bar
<b>365 534</b>	Flexible outlet with 90° angled nozzle with quarter turn opening non-drip tip	<b>OPERATING TEMPERATURE RANGE</b>	-10 °C to 60 °C
<b>365 532</b>	Flexible outlet with automatic non-drip tip	<b>FLUID INLET</b>	1/2" BSP (F)
<b>365 537</b>	Formable outlet with quarter turn opening non-drip tip	<b>FLUID OUTLET</b>	1/2" BSP (F)
<b>365 538</b>	Formable outlet with quarter turn opening narrow non-drip tip (Ø 8 mm)	<b>WETTED PARTS</b>	Acetal , Aluminium, Stainless steel, NBR, Zinc plated steel, TPU, Polyamide
		<b>FLUID COMPATIBILITY</b>	Lubricants, ATF, antifreeze (Glycol) and antifreeze water solutions
		<b>WEIGHT</b>	1,30 kg

CONTROL VALVES FOR OIL AND OTHER FLUIDS, PA 40 SERIES			
PART No.	OUTLET NOZZLE TYPE	TECHNICAL DATA	
<b>363 100</b>	No outlet	<b>MAXIMUM FLOW RATE</b>	40 l/min
<b>363 116</b>	60° rigid outlet and quarter turn non drip tip	<b>MAXIMUM WORKING PRESSURE</b>	100 bar
<b>363 115</b>	Flexible outlet with 90° tube and automatic non-drip tip	<b>OPERATING TEMPERATURE RANGE</b>	-10 °C to 70 °C
<b>363 114</b>	Flexible outlet with 90° tube and quarter turn non-drip tip	<b>FLUID INLET</b>	1/2" BSP (F)
<b>363 112</b>	Flexible outlet and automatic non-drip tip	<b>FLUID OUTLET</b>	1/2" BSP (F)
<b>363 117</b>	Formable outlet and quarter turn non-drip	<b>WETTED PARTS</b>	Aluminium, Zinc plated steel, TPU, Polyamide
<b>363 118</b>	Formable outlet and quarter turn narrow non-drip (Ø 8 mm)	<b>FLUID COMPATIBILITY</b>	Lubricants, ATF, antifreeze (Glycol) and antifreeze water solutions
		<b>WEIGHT</b>	470 g

MECHANICAL METERED CONTROL VALVES FOR OIL AND OTHER FLUIDS, MC30 SERIES			
PART No.	OUTLET NOZZLE TYPE	TECHNICAL DATA	
<b>METRIC METERS. 0 - 10 LITER DIAL, TOTALIZER IN LITERS - LUBRICANTS</b>		<b>MAXIMUM FLOW RATE</b>	30 l/min
<b>365 801</b>	No outlet. Includes inlet swivel with shroud	<b>ACCURACY</b>	+/- 0,65 %
<b>365 803</b>	Flexible outlet with automatic non-drip tip	<b>MAXIMUM WORKING PRESSURE</b>	100 bar
<b>365 804</b>	Formable outlet with quarter turn opening non-drip tip	<b>OPERATING TEMPERATURE RANGE</b>	-10 °C to 60°C
<b>METRIC METERS. 0 - 10 LITER DIAL, TOTALIZER IN LITERS - ANTIFREEZE</b>		<b>FLUID INLET</b>	1/2" BSP (F)
<b>365 824</b>	Formable outlet with quarter turn opening non-drip tip	<b>FLUID OUTLET</b>	1/2" BSP (F)
<b>QUARTS/GALLONS METERS. 4 - 16 QUART DIAL, TOTALIZER IN GALLONS - LUBRICANTS</b>		<b>WETTED PARTS</b>	Aluminium, Zinc alloy, Stainless steel, NBR, Brass, Steel, TPU, Polyamide
<b>365 802</b>	No outlet. Includes inlet swivel with shroud	<b>FLUID COMPATIBILITY</b>	Synthetic and mineral oils, ATF, Antifreeze, Gear oils
<b>365 805</b>	Formable outlet with automatic non-drip tip	<b>WEIGHT</b>	1,7 kg
<b>365 806</b>	Formable outlet with quarter turn opening non-drip tip		
<b>QUARTS/GALLONS METERS. 4 - 16 QUART DIAL, TOTALIZER IN GALLONS - ANTIFREEZE</b>			
<b>365 826</b>	Formable outlet with quarter turn opening non-drip tip		

MECHANICAL METERED PRESET CONTROL VALVES FOR OIL AND OTHER FLUIDS, MP30 SERIES			
PART No.	OUTLET NOZZLE TYPE	TECHNICAL DATA	
<b>METRIC METERS. 0 - 60 liter dial, totalizer in liters</b>		<b>MAXIMUM FLOW RATE</b>	30 l/min
<b>365 811</b>	Rigid outlet with semiautomatic non drip tip	<b>ACCURACY</b>	+/- 0,65 %
<b>QUARTS/GALLONS METERS. 0 - 60 quart dial, totalizer in gallons</b>		<b>MAXIMUM WORKING PRESSURE</b>	100 bar
<b>365 812</b>	Rigid outlet with semiautomatic non drip tip	<b>OPERATING TEMPERATURE RANGE</b>	-10 °C to 60 °C
<b>QUARTS/GALLONS METERS. 0 - 60 gallon dial, totalizer in gallons</b>		<b>FLUID INLET</b>	1/2" BSP (F)
<b>365 813</b>	Rigid outlet with semiautomatic non drip tip	<b>FLUID OUTLET</b>	1/2" BSP (F)
		<b>WETTED PARTS</b>	Aluminium, Zinc alloy, Stainless steel, NBR, Brass, Steel, TPU, Polyamide
		<b>FLUID COMPATIBILITY</b>	Synthetic and mineral oils, ATF, Antifreeze
		<b>WEIGHT</b>	2 kg

Non drip tips are manufactured in brass.

All models include inlet swivel with shroud and the outlet listed for each model.

GREASE CONTROL VALVE, PG77 SERIES				FOUR-WAY VALVE	
PART No.	OUTLET NOZZLE TYPE	TECHNICAL DATA		PART No.	DESCRIPTION
<b>413 077</b>	30° rigid outlet	<b>MAXIMUM WORKING PRESSURE</b>	500 bar	<b>361 300</b>	Four-way evacuation valve, 1" BSP (F)
<b>413 080</b>	30° rigid, with Z-swivel	<b>FLUID INLET</b>	1/4" BSP (F)		
<b>413 082</b>	Flexible outlet with Z-swivel	<b>FLUID OUTLET</b>	1/8" BSP (F)		
		<b>FLUID COMPATIBILITY</b>	Grease		
		<b>WEIGHT</b>	1 kg		

MANUAL LUBRICATION			WASTE OIL EVACUATION KITS	
PART No.	DESCRIPTION		PART No.	DESCRIPTION
<b>150 000</b>	Multipressure grease bucket pump, 16 kg		<b>559 101</b>	Waste oil evacuation DF100 pump kit
<b>320 400</b>	Oil bucket pump, 16 litres		<b>559 501</b>	Waste oil evacuation DP200 pump kit
<b>157 000</b>	Pedal action grease pump		<b>379 100</b>	Waste oil evacuation PM2 pump kit
<b>304 500</b>	Lever action metal drum pump for lubricants		<b>559 111</b>	Waste oil evacuation DF100 pump kit with RM-100 hose reel
<b>300 006</b>	Lever action plastic drum pump for AdBlue® / DEF		<b>559 511</b>	Waste oil evacuation DP200 pump kit with RM-100 hose reel
<b>101 200</b>	Lever action grease pump, 500 cc			
<b>101 800</b>	Lever action grease pump, 1.000 cc			

**SAMOA INDUSTRIAL, S.A. - HEADQUARTERS**

SPAIN AND EXPORT MARKETS

POL. IND. PORCEYO, I-14 - CAMINO DEL FONTÁN, 831

E-33392 GIJÓN (ASTURIAS), SPAIN

TEL.: +34 985 381 488 - FAX: + 34 985 147 213

export@samoaindustrial.com - www.samoaindustrial.com

**SAMOA LTD.**

UNITED KINGDOM AND REP. OF IRELAND

ASTURIAS HOUSE - BARRS FOLD ROAD

WINGATES INDUSTRIAL PARK

WESTHOUGHTON, BL5 3XP, UK

TEL.: +44 1942 850600 - FAX: +44 1942 812160

sales@samoaltd.uk - www.samoaltd.uk

**SAMOA S.A.R.L.**

FRANCE

P.A.E.I. DU GIESSEN

3, RUE DE BRISCHBACH

67750 SCHERWILLER, FRANCE

TEL.: +33 3 88 82 79 62 - FAX: +33 3 88 82 77 88

samoafrance@samoafrance.com - www.samoafrance.com

**SAMOA-HALLBAUER GMBH**

GERMANY AND AUSTRIA

INDUSTRIESTRASSE, 18

D-68519 VIERNHEIM, GERMANY

TEL.: +49 6204 7095-0 - FAX: +49 6204 7095-33

info@samoahallbauer.de - www.samoahallbauer.de

**SAMSON CORPORATION**

NORTH AMERICA

ONE SAMSON WAY

SWANNANOVA, NC 28778, USA

TEL.: +1 828 686 8511 - FAX: +1 828 686 8533

info@samsoncorporation.com - www.samsoncorporation.com

**SAMOA CHINA SALES OFFICE**

ROOM 702, RONG GUANG BUSINESS CENTER

572 KUN MING ROAD, SHANGHAI 200082, P.R. CHINA

TEL.: +86 21 3319 0210 - FAX: +86 21 5102 7883

china@samoaindustrial.com

©Copyright, SAMOA INDUSTRIAL, S.A.

SAMOA Industrial, S.A. is an ISO 9001, ISO 14001  
and OHSAS 18001 certified company.

